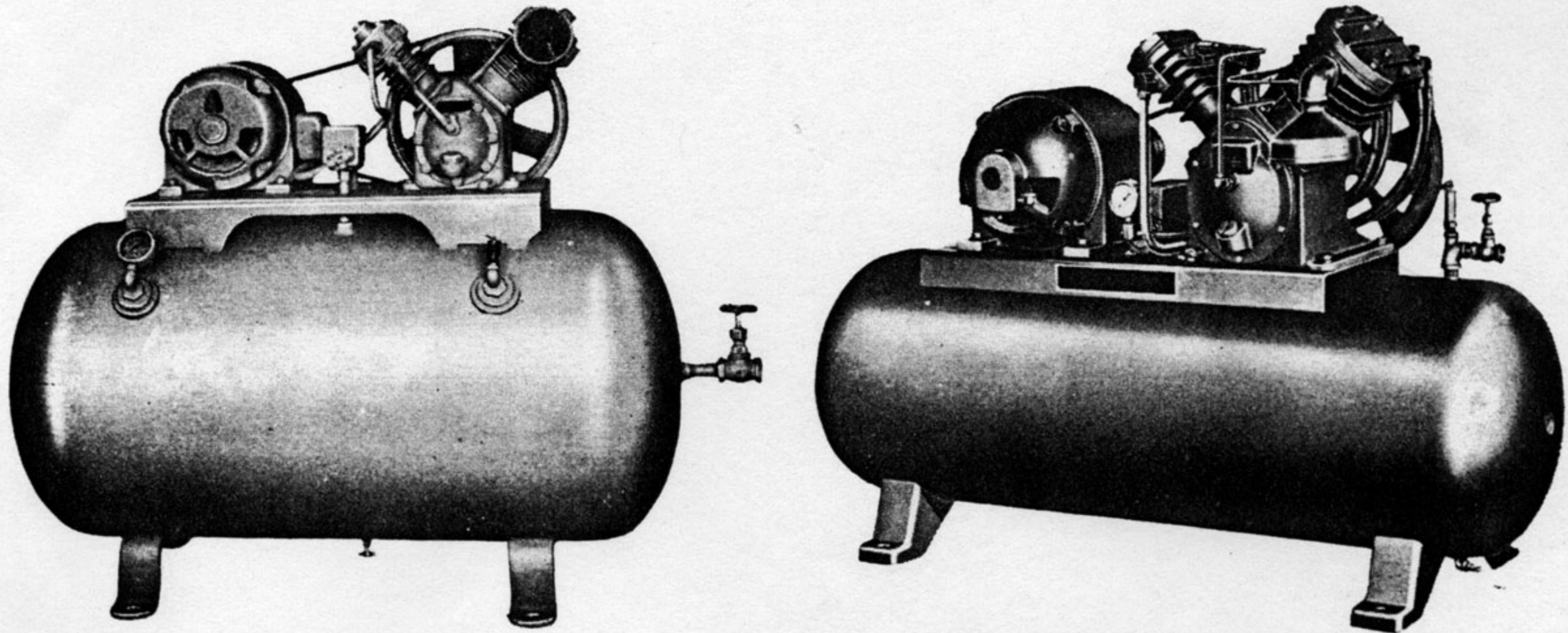


TYPICAL MOTOR COMPRESSORS



Catalogue No.	Diaphone Compressed Air Outfits
8100	Type D 110/220 volts, 60 cycles, 3 phase
8101	Type D 220 volts, 50 cycles
8102	Type D 110/220 volts, 60 cycles, single phase
8103	Type B 110/220 volts, 60 cycles, 3 phase
8104	Type B 110/220 volts, 60 cycles, single phase
8104-1	Type B 220 volts, 50 cycles
8200	Type D Diaphone outfit, with gasoline engine-driven compressor
8201	Type B Diaphone outfit, with gasoline engine-driven compressor
8350	Control valve, electro-pneumatic
8400	Type B Diaphone horn only
8402	Horn only, F-8
8403	" " , F-8, 2-way assembly
8404	" " , F-8, 3-way assembly
8405	" " , F-8, 4-way assembly
8406	" " , F-10
8407	" " , F-10, 2-way assembly
8408	" " , F-10, 3-way assembly
8409	" " , F-10, 4-way assembly



company · newton upper falls 64, massachusetts